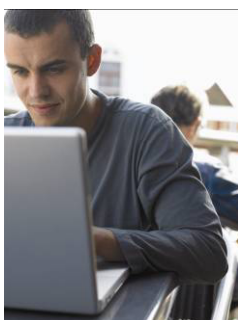


How to support part-time tutors professional development needs by using Wiki and Blogs

Background

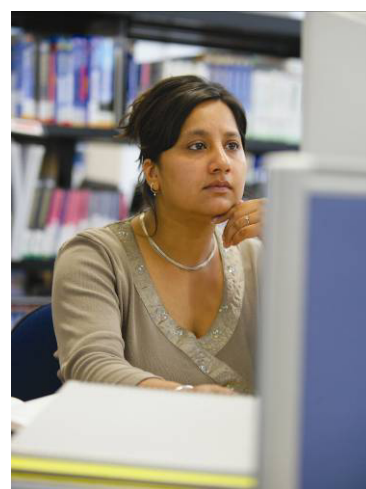
PROWE (Personal Repositories Online Wiki Environment) was a research project funded under the JISC Digital Repositories Programme (03/05). The project's partners were the Open University (Library Services and IET) and the University of Leicester, Beyond Distance Research Alliance.

The project's main aim was to **investigate** the extent to which **informal repositories** within **wiki and blogs** could meet the **professional development needs** of **part-time distance tutors** for sharing and storing resources.



Summary

The PROWE user **requirements analyses**, the results from later **evaluations**, and the **experience** of providing wiki and blogs to support part-time tutors' CPD all input to the development of the **PROWE Ecology** and the set of **'How To'/Questions to Ask', guides**. The Ecology and the Guides provide an **integrated ecological approach** to guiding development of wiki and blog based systems to support part-time tutors (and other remote portfolio workers) professional development needs.



PROWE Ecology

The PROWE Ecology takes a baseline from Nardi and O'Day, 1999,¹ and incorporates the idea of "actant" from Actor Network Theory – thus allowing for an **understanding of agency** on the part of otherwise "inanimate" elements involved in the operation of the environment. The **intersection points** between the highest level of system elements (users, content, software, institution) within the ecology have **inspired the production of six "How To"/Questions to ask', guides** which include the 'barriers and enablers to system uptake or use':

1. **Barriers and enablers** to system uptake or use
2. The Institutional Perspective
3. The Knowledge Perspective
4. The Users' Perspective: Part One – relations with the institution
5. The Users' Perspective: Part Two – technology issues
6. The Users' Perspective: Part Three – content and collaboration

1. Nardi and O'Day (1999) First Monday 4 (5)
http://www.firstmonday.org/issues/issue4_5/nardi_chapter4.html

PROWE Guides

The "How To"/Questions to Ask' guides include the questions arising from the intersections (taking into account the role and position-conflict issues). It is intended that the responses to the questions will **help all potential users**, institutions etc. **pinpoint the potential, or actual, keystone species** within any system and that this will allow new system implementers, designers or potential users to understand and plan for possible conflicts of interest so that **system sustainability can be secured**.

Contact

info@prowe.ac.uk